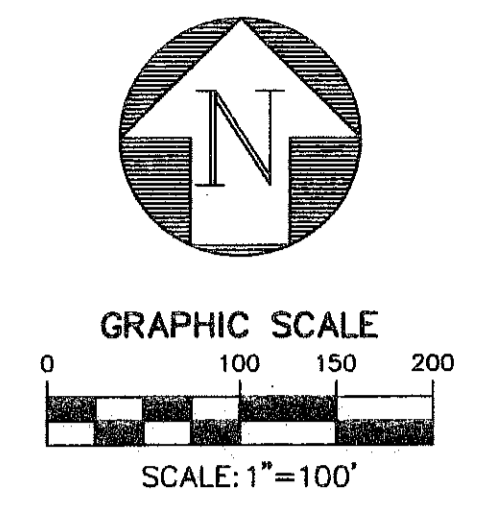


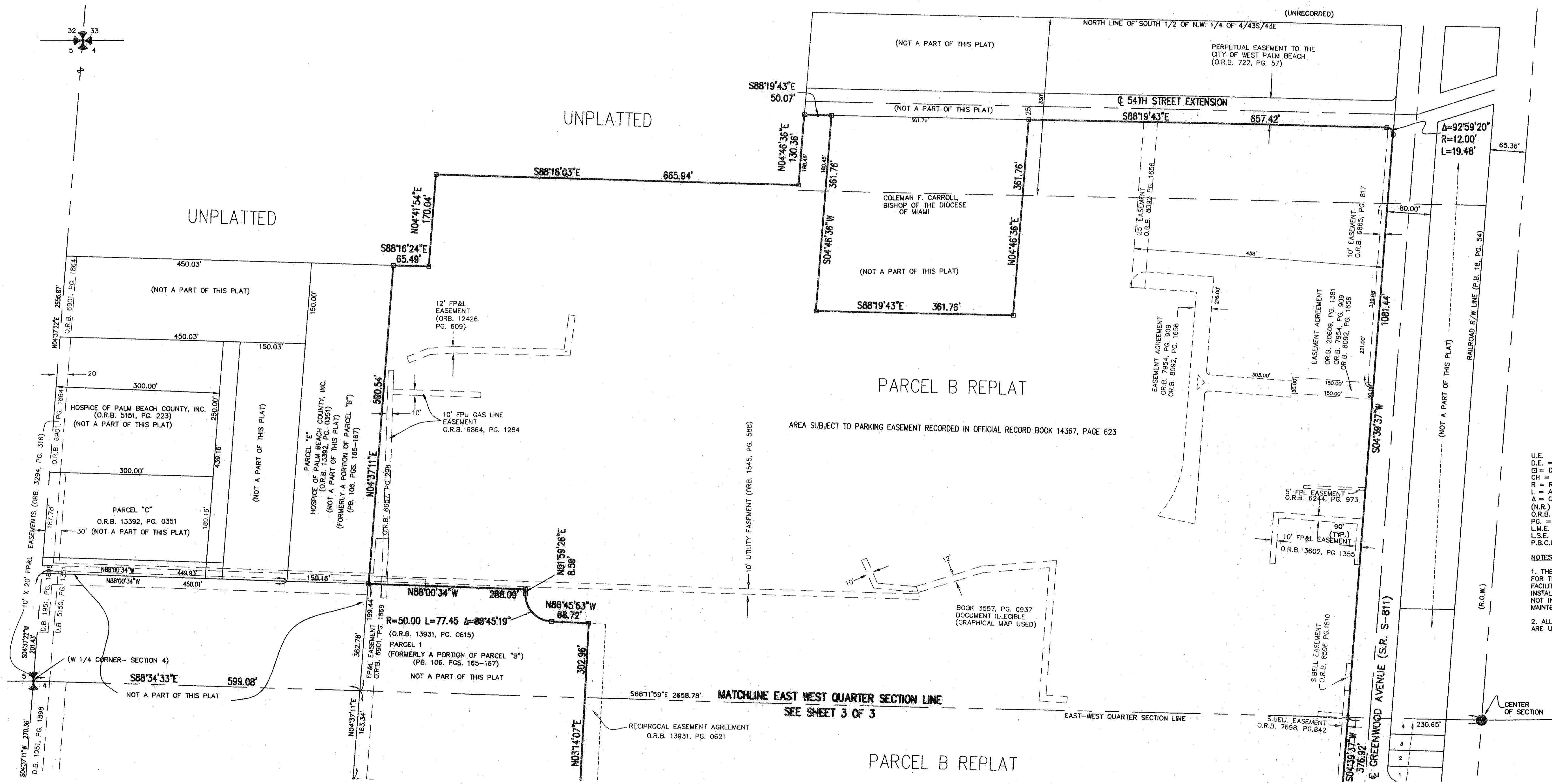
# TENET ST. MARY'S PARCEL B REPLAT

93

Being a replat of PARCEL B of the plat of TENET ST. MARY'S as recorded in Plat Book 106, Pages 165 through 167, of the Public Records of Palm Beach County, Florida, lying in Section 4, Township 43 South, Range 43 East, City of West Palm Beach, Palm Beach County, Florida.



SHEET 2 OF 3  
FEBRUARY 2009



- LEGEND**
- U.E. = UTILITY EASEMENT
  - D.E. = DRAINAGE EASEMENT
  - = DENOTES PERMANENT REFERENCE MONUMENT
  - CH = CHORD
  - R = RADIUS
  - L = ARC LENGTH
  - A = CENTRAL ANGLE
  - (N.R.) = NON-RADIAL
  - O.R.B. = OFFICIAL RECORD BOOK
  - P.G. = PAGE
  - L.M.E. = LAKE MAINTENANCE EASEMENT
  - L.S.E. = LIFT STATION EASEMENT
  - P.B.C.U.E. = PALM BEACH COUNTY UTILITY EASEMENT
- NOTES:**
1. THE UTILITY EASEMENTS AS SHOWN HEREON ARE FOR THE CONSTRUCTION AND MAINTENANCE OF UTILITY FACILITIES, INCLUDING CABLE TELEVISION SYSTEMS. THE INSTALLATION OF CABLE TELEVISION SYSTEMS SHALL NOT INTERFERE WITH THE CONSTRUCTION AND MAINTENANCE OF OTHER UTILITIES.
  2. ALL LINEAR UNITS OF MEASUREMENT SHOWN HEREON ARE UNITED STATES SURVEY FOOT.

Y:\Land Projects RE\9525307\Map\Phase2\replat.dwg 1/26/2009 3:10:39 PM EST

THIS INSTRUMENT PREPARED BY GARY A. RAGER, P.S.M. #LS4828 STATE OF FLORIDA. ENGINEERING GROUP INC., ENGINEERS, SURVEYORS & GIS MAPPERS 1201 BELVEDERE ROAD, WEST PALM BEACH, FLORIDA 33405. CERTIFICATE OF AUTHORIZATION NO. LB0006603

<b>TENET ST. MARY'S PARCEL B REPLAT</b>		<b>2/3</b>
DATE	FEBRUARY 2009	SHEET <b>2/3</b> JOB NO. <b>98523.11</b>
SCALE	1" = 100'	
CAD FILE	PHASE2WOPLAT.DWG	
PROJECT	98523.07	
CHECKED	G. RAGER	

A Higher Standard of Excellence  
**engenuity group inc.**  
ENGINEERS • SURVEYORS • GIS MAPPERS  
1201 BELVEDERE ROAD, WEST PALM BEACH, FLORIDA 33405  
PH (561)655-1151 • FAX (561)832-9390  
WWW.ENGENUITYGROUP.COM • LB NO. 6603